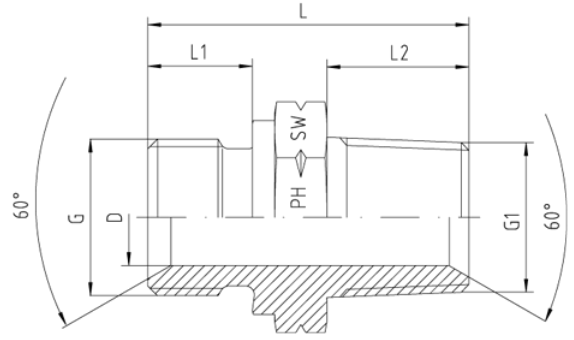
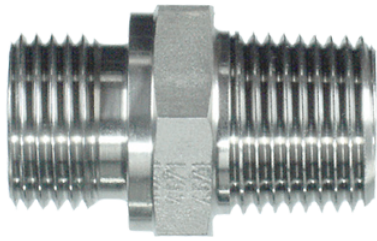


BSP - Parallel - NPT



BSP - Male with 60°-Cone and Sealing Shoulder Form B

NPT - Male with 60°-Cone

Other sizes on request!

Pressure	Thread		Approx. Dimensions					
	PN	G = BSP	G1 = NPT	L	L1	L2	D	SW
Series A								
400		1/8"-28	1/8"-27	24,5	8	10,0	4,0	14
400		1/4"-19	1/4"-18	32,5	10	15,0	6,0	19
400		3/8"-19	3/8"-18	38,0	12	15,3	9,0	22
400		1/2"-14	1/2"-14	43,0	14	20,0	12,5	27
400		3/4"-14	3/4"-14	47,0	16	20,0	17,5	32
400		1"-11	1"-11,5	54,5	18	25,0	22,5	41
200		1 1/4"-11	1 1/4"-11,5	66,0	20	25,5	30,0	50
200		1 1/2"-11	1 1/2"-11,5	64,0	22	26,0	37,0	55
100		2"-11	2"-11,5	66,0	25	26,0	45,0	70
Series B								
400		1/8"-28	1/4"-18	30,0	8	15,0	4,0	14
400		1/4"-19	1/8"-27	27,5	10	10,0	4,0	19
400		1/4"-19	3/8"-18	33,0	10	15,3	6,0	19
400		1/4"-19	1/2"-14	40,0	10	20,0	6,0	22
400		3/8"-19	1/4"-18	35,5	12	15,0	7,0	22
400		3/8"-19	1/2"-14	42,0	12	20,0	9,0	22
400		3/8"-19	3/4"-14	42,0	12	20,0	9,0	27
400		1/2"-14	1/4"-18	40,0	14	15,0	7,0	27
400		1/2"-14	3/8"-18	40,0	14	15,3	9,0	27
400		1/2"-14	3/4"-14	45,0	14	20,0	12,0	27
400		1/2"-14	1"-11,5	50,0	14	25,0	12,5	36
400		3/4"-14	1/2"-14	45,0	16	20,0	12,5	32
400		3/4"-14	1"-11,5	52,0	16	25,0	17,5	36
400		1"-11	3/8"-18	45,0	18	15,3	9,0	41
400		1"-11	1/2"-14	50,0	18	20,0	12,5	41
400		1"-11	3/4"-14	50,0	18	20,0	15,0	41